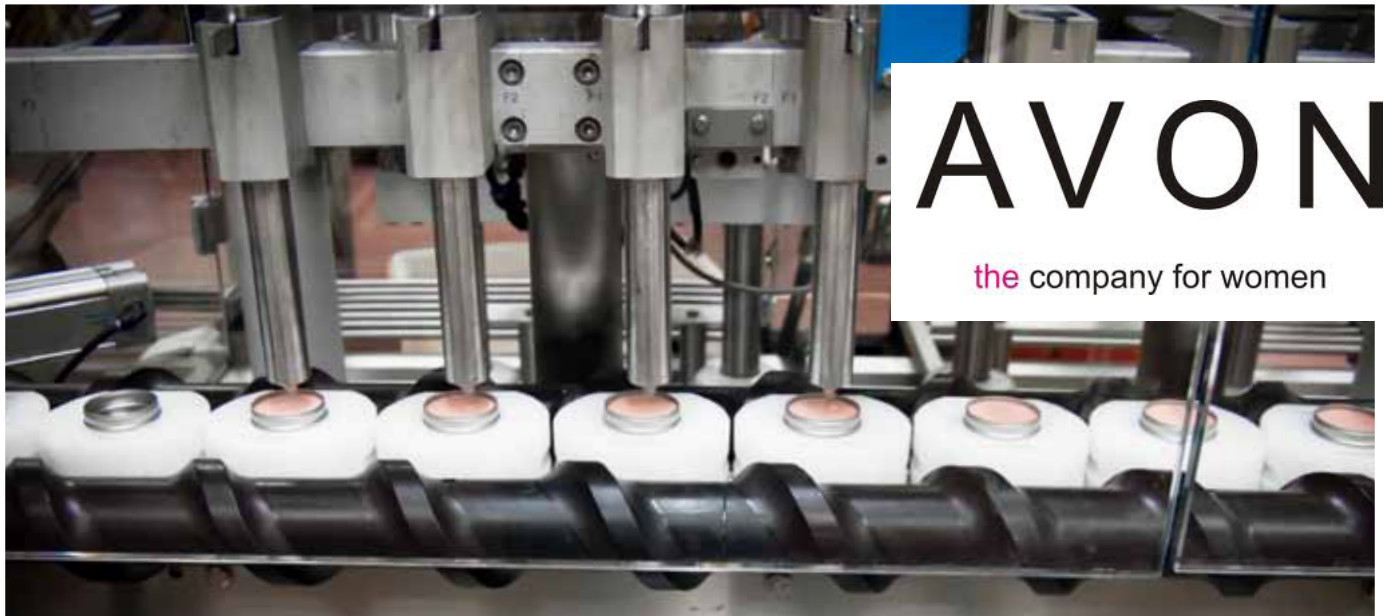


BY ORDER OF AVON COSMETICS GMBH

# LIQUIDATION SALE

OF THE GERMAN PRODUCTION SITE

## NEUFAHRN



Acting as agents on behalf of AVON Cosmetics GmbH, Maynards Europe is conducting a sales program during which all surplus assets of the Neufahrn site will be liquidated. Well maintained, high quality production and packaging equipment as well as material handling, storing and general plant equipment will be available from June 2012, when production at the Neufahrn site closes.

**From April 2012, complete production and filling lines will be available for purchase through privately negotiated sales. Single assets will be sold through auction in summer 2012.**

Large scope of equipment and machinery  
available from June 2012  
more information on

[www.maynards.com](http://www.maynards.com)

**Maynards**  
SINCE 1902  
AUCTIONEERS | LIQUIDATORS | APPRAISERS

**Maynards**  
SINCE 1902  
AUCTIONEERS | LIQUIDATORS | APPRAISERS

As global auctioneers of industrial equipment, Maynards Europe acts on behalf of AVON in liquidating the production facilities and assets of this site.

Success in the auction and liquidation industry comes from a combination of experience, professionalism and initiative. Maynards leverages more than 100 years of all three to efficiently match assets for sale with qualified buyers. In over 100 auctions and liquidations per year, we return maximum value to our clients by combining traditional sales methods with innovative integrated marketing strategies. Since 1902, the company has specialized in the asset conversion of commercial inventories and industrial equipment, and provided comprehensive valuation services for collateral-based lending, asset disposition and acquisition.

## AVON Cosmetics GmbH Production site at Neufahrn - Germany



# AVON

the company for women

### Products:

- Lipsticks
- Nail Enamels
- Tubes
- Make-ups
- Hotfills

### Production Data 2010:

- 1.930 different products
- produced: 229.000.000 pieces

### Plant Figures

- 116,000 square meters – plant area
- 48,379 square meters – floor space
- Plant capacity: 232.000.000 fullsize pieces

To receive regular updates or to arrange an inspection appointment, please register with us by sending an email to

**Avon@maynards.com**



About .....	2
Overview .....	3
Processing .....	4
Cooling system .....	4
Standing boiler .....	4
Agitator .....	4
Mixing tanks .....	5
CIP cleaning system .....	5
Ball mills .....	5
Filling .....	6
Line 6 - Make-up filling line .....	6
Line 7 - Rotary filling machine .....	7
Line 30 - Lipstick filling and packaging line .....	7
Line 32 - Lipstick filling and packaging line .....	8
Line 43 - Lipstick filling and packaging line .....	8
Line 45 - Lipstick filling and packaging line .....	8
Line 47 - Hotfilling system .....	9
Packaging .....	10
Line 9 - Cartoning .....	10
Line 24 - Flat bag-sleeve packaging .....	10
Line 32 1/2 - Cartoning .....	10
Line 38 - Cartoning .....	10
Line 39 - Cartoning .....	10
Label-Center .....	10
Line 44 - Cartoning .....	11
Line 57 - Sleeve-wrapping .....	11
Line 58 - Sleeve-wrapping .....	11
Line 59 - Sleeve-wrapping .....	11
Storage/ Picking .....	12
Conveyors .....	12
High-bay-system .....	12
Product dispensing .....	12
Paternoster cabinets .....	12
Storage devices .....	12
Forklift trucks .....	13
Office .....	14
Postal Department .....	14
IT components .....	14
Office-Furniture/equipment .....	15
Canteen .....	16
Laboratory .....	16
Workshop .....	17
Contact .....	18



## PROCESSING

Various mixing tanks, stainless steel (PRESS INDUSTRIA, KUCHENBAUER, OLSA), stand boilers V4A, cooling system, agitators, CIP system, ball mills, etc.

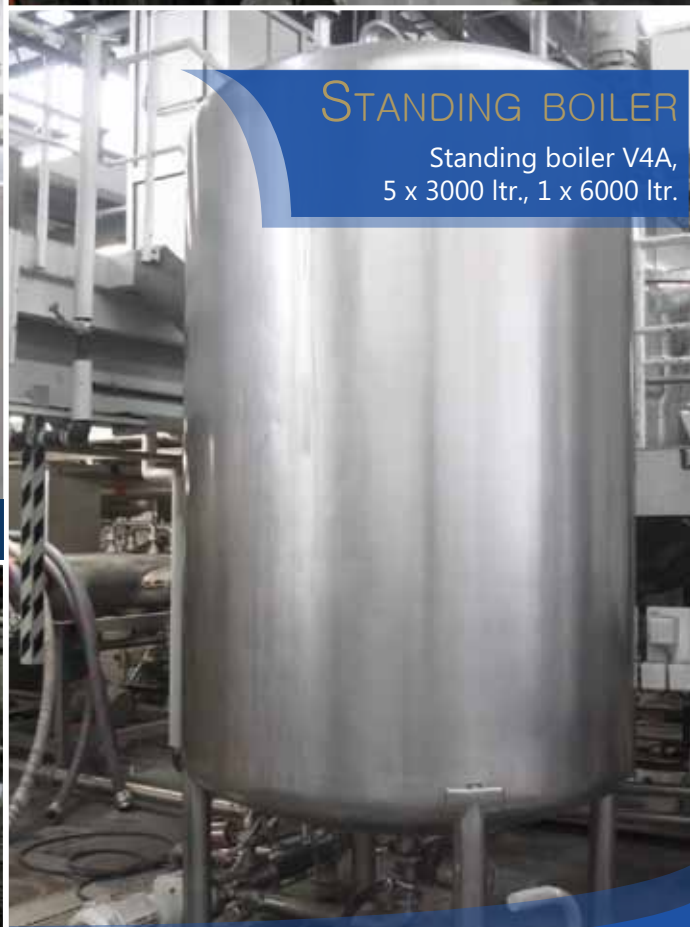


## AGITATOR

INOTEC agitator type IJ 420.030w EX, year 2011 with wall suction base included

## STANDING BOILER

Standing boiler V4A, 5 x 3000 ltr., 1 x 6000 ltr.



## COOLING SYSTEM

Cooling system for mixing tank Votator II (USA) 121 519 type, year 2006 with 3 pieces of cooling tanks, pumps, piping, equipment cabinet





**Mixing tank with two side tanks EMPL**, year 1998, capacity 6000 ltr.



**PPA mixing tank**, year 1981, capacity 100 ltr. mixing tank with side



cabinets to boiler



**Mixing tank with two side tanks EMPL**, built 1998, capacity 6000 ltr., Electr. agitator



**CIP CLEANING SYSTEM EMPL**, year 1988, operating temperature 80 ° C - Detergents: Cleaning oil for boiler cleaning



**Mixing tank heatable** (boiler SWEP)



**BALL MILL FRYMA** type MS18, year 1986 with pigment-grinder (PVC balls)



**OLSA Mixing tank**, year 1999, capacity 225 ltr.

## MIXING TANKS

- Mixing tank heatable (boiler SWEP) make PRESS Industria (Italy) with an electric mixer and NETZSCH pumps, built around 1968, 1 x 900 ltr. content, 5 x 2500 ltr. content, 1 x 4500 ltr. content.
- Mixing tank with two side tanks PRESS INDUSTRIA, year 1966, capacity 5000 ltr. agitator overhauled, new turbine
- Mixing tank with two side tanks EMPL, year 1998, capacity 6000 ltr., electric agitator
- Mixing tank KUCHENBAUER, year 1982, capacity 570 ltr. (without side mixing tank)
- Mixing tank KUCHENBAUER, year 1991, capacity 353 ltr. with side mixing tank
- Mixing tank KUCHENBAUER, year 1982, capacity 155 ltr. with side mixing tank
- PPA mixing tank, year 1981, capacity 180 ltr. with side mixing tank
- PPA mixing tank, year 1981, capacity 100 ltr. with side mixing tank
- OLSA mixing tank, year 1999, capacity 225 ltr.





SEVEN COMPLETE  
MANUFACTURING LINES  
for production of lipsticks,  
hotfillings and make-ups.  
The lines include partial fil-  
ling, assembling, labeling  
and packaging of cosmetic  
products.



L6: **Make-up filling line** for 30 ml Foundation



L6: Output 60 pcs / min



L6: 4-way-filling system **INOVA**



L6: 4-way-type filling system **GRONINGER DFV 6000**, year 1986



L6: 4-way-type filling sys-  
tem **GRONINGER DFV 6000**



L6: head labeling machine **PAGOMAT 6/2**  
**Pagosystem 144**, year 2008



L6: **cap sorting** machine with  
**mounting device** (2 formats)



L6: **FIX Depositors** with 4 hooks, year 1999  
cartoner **BOSCH type KT5**, year 1993

## Line 6

### MAKE-UP FILLING LINE

Output 60 pcs / min consisting of:

- **KUGLER conveyor system** built in 1993
- **4-way-filling system INOVA**, type VFM 3004 year 1991
- **4-way-type filling system GRONINGER DFV 6000**, year 1986
- **cap sorting machine with mounting device** (2 formats)
- **head labeling machine PAGOMAT 6/2** - Pagosystem 144, year 2008
- side labeling machine, year 1997
- **FIX Depositors with 4 hooks**, year 1999
- **cartoner BOSCH type KT5**, year 1993
- packer **OLI**, built around 1990
- box converter with pieces counter
- **electronic scales SARTORIUS type EWK 2010**, year 2008
- Intermediate conveyor belts **Flex-LINK**







L7: 24- Stations - **Rotary filling machine**



L7: Feeder Control Unit  
EMPL type **WM 08-897**



L7: transfer unit type  
**STG KTC / STA**



L7: **cap mounting machine RESIN** (4 - fold screw unit)

## Line 7 **ROTARY FILLING MACHINE**

Built around 1980 with **24-stations**. Retrofitted with: **Feeder Control Unit EMPL** type WM 08-897 (year 2008) with SIEMENS multi-panel, cap **mounting machine RESIN** (4 - fold screw unit) series 73 / Model U40-454 and **transfer unit type STG KTC / STA**



L30: **revolving plate system** with 180 molds (80-90 ° C)



L30: **cap applicator**



L30: Completing unit type **MINI-FAL (built 2007)**

## Line 30

### **LIPSTICK FILLING AND PACKAGING LINE**

**WECKERLE W240/180 SL** type, year 2002, Serial No. 1237, revolving plate system with 180 molds (80-90° C). Completing unit type **MINI-FAL (built 2007)**, cap applicator, and 2-way labeling system **HERMA, type H300 SL Vario 8** for soil and site labeling



## Line 32

### LIPSTICK FILLING AND PACKAGING LINE

**WECKERLE SL 180, year 1994** - minute performance of 40 pieces, **rotary table with 180 molds (80-90 ° C)**, Lauer PCS 085 control with feeding and completing unit (AVON), and **double melting container** with WECKERLE agitator



L32: Lipstick filling and packaging line **WECKERLE SL 180, year 1994**



L32: **rotary table with 180 molds (80-90° C)**



L32: **rotary table with 180 molds (80-90° C)**



L32: **Lauer PCS 085 control** with feeding and completing unit



L32: **double melting container** with **WECKERLE agitator**

## Line 45

### LIPSTICK FILLING AND PACKAGING LINE

Lipstick filling and packaging line **WECKERLE type 180K, year 1993**, capacity **46 pieces per minute**, rotary table with a **180 molds (80-90 ° C)**, completion unit type 5002 S, labeling unit METRONIC Type TC 1003, **Cartoner IMA Type K 150/C** (year 1994)



L45: **completion unit type 5002 S**



L45: **labeling unit METRONIC Type TC 1003**



L45: **Cartoner IMA Type K 150 / C, year 1994**



L45: Lipstick filling and packaging line **WECKERLE type 180K, year 1993**

L43: Lipstick filling and packaging line **WECKERLE type W240/180 SL, year 1998**



L43: **completion unit (AVON)**



L43: **Transfer unit**



## Line 43

**LIPSTICK FILLING AND PACKAGING LINE**  
**WECKERLE type W240/180 SL, year 1998** - 46 pieces per minute capacity, **rotary table with 180 molds (80-90° C)**, completion unit (AVON).





L47: cooling tunnel **Steriline type U018 TE**



L47: cartoner **PPS type CMV60**



L47: Marking Systems **MARKEN type SmartLaser 1102**



L47: caps inserting machine **KUGLER type Flexocap**  
(multiple formats available)



L47: Hotfilling system, year 2008, output of **60 pieces per minute**



L47: 2x4 in-line filling-machine **KUGLER type Linofill**,  
max 90° C



L47: multi packer **OLI type 210V**



L47: multi packer **OLI type 210V**  
- detail view

## Line 47

### HOTFILLING SYSTEM

built in 2008, capacity of 60 pieces per minute:  
including **2x4 in-line-filling-machine KUGLER type Linofill**,  
max 90 °C. Hot-glue-machine **NORDSON type 3400V** /  
cooling tunnel **Steriline type U018 TE** /  
**caps inserting machine KUGLER type Flexocap** (various for-  
mats available) with vibrating sorting bowl, feeder and integ-  
rated bottom labellers **HERMA** / **cartoner PPS type CMV60**  
/ Marking Systems **MARKEN type SmartLaser 1102** / multi  
packer **OLI type 210V** / intermediate conveyor belts



L47: Vibration sorting bowl, feeding device and  
**HERMA bottom labeler**

To receive regular updates or to arrange an  
inspection appointment, please register with  
us by sending an email to

**Avon@maynards.com**



## NINE LINES

and further equipment for packaging and labeling of cosmetic products, including flat bags, tubes, cans, etc ...



L24: Flat bag-sleeve packaging machine ILA-PACK type Carrera 1000PC, year 2000, product length 50 to 500 mm, width 20 to 230 mm



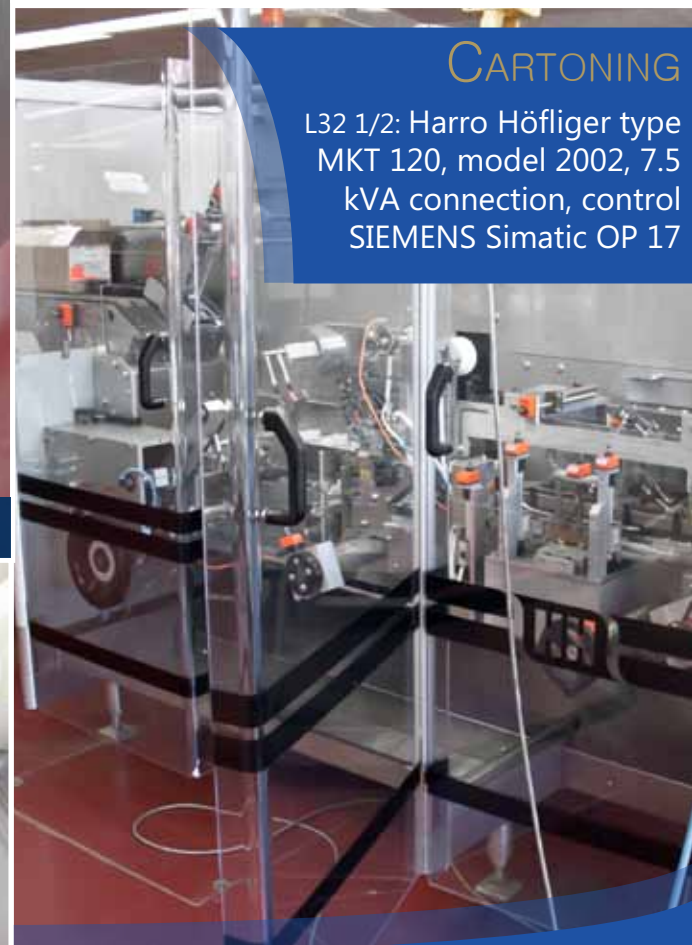
L9: Cartoner CAM Type C 15048, year 1998



**CARTONER**  
L39: BOSCH CART5  
Cartoning machine  
type, year 1994



L45: Cartoner IMA Type K 150 / C, year 1994



**CARTONING**  
L32 1/2: Harro Höfliger type  
MKT 120, model 2002, 7.5  
kVA connection, control  
SIEMENS Simatic OP 17



Label Center

## LABEL CENTER

Consisting of two pieces of roll labeling units Avery ALX 924 Type, year 2009





**L57:** horiz. Sleeve-wrapping machine **LogicPak LPK Type 150**, year 2002, capacity 120 pieces per minute, format size 40-200 mm



**L58:** horiz. Sleeve-wrapping machine **LogicPak LPK Type 150**, year 2002, capacity 120 pieces per minute, format size 40-200 mm



**L59:** horiz. Sleeve-wrapping machine **double head-LPK LOGCIPAK Type 150**, year 2002, capacity 240 pieces per minute, format size 40-200 mm



**L44:** retrofitted with laser marker **MARKEM type SmartLaser 110**, year 2003



**L44:** laser marker - detail view



**L44:** Packer **OLI Model 210** year 2001



## Line 44

### CARTONER CAM

built around 1970, retrofitted with laser marker **MARKEM type SmartLaser 110**, year 2003 and Packer **OLI Model 210**, year 2001



## CONVEYORS

Conveyor systems for the transport of card-board boxes in and between the areas of production, warehouse and shipping



Elevating conveyor



Conveyor belts with electric drive



Pallet turner



Pallet winder



Pallet winder



## PRODUCT DISPENSING

Dispensing of small quantities for about 800 items. Donation service about 2000 items / h

Paternoster Storage Cabinet - **INDUSTRI EVER**



## HIGH-BAY-SYSTEM

Several hundred meters high bay warehouse with over 4000 locations - JUNGHEINRICH and BITO





EX-protected vehicles  
e.g. Miag, EGI 15XE, year 1994 - only 366 hours of operation



VNA trucks, narrow aisle forklifts  
e.g. Jungheinrich ETX-K125SG, year 1999



Pickers  
e.g. Jungheinrich, ETVA 16, 1995



Special trucks  
e.g. Linde E20P-02, year 2001



Hand pallet trucks, scissor lifts  
e.g. Jungheinrich, AM 2000, year 2003

## FORKLIFT TRUCKS

More than 180 forklift trucks: Diesel forklift, electric pallet stackers, pallet trucks with platform, hand trucks, EX-protected vehicles, hand trucks, lift trucks, turret trucks, order pickers, pallet trucks, scissor lifts, reach trucks, slipsheet forklifts



High-and low-lift trucks  
e.g. Jungheinrich, EKE 20s G 20-115-54, year 2003

To receive regular updates or to arrange an inspection appointment, please register with us by sending an email to

**Avon@maynards.com**



## POSTAL DEPARTMENT

Machines for handling of mail  
and marketing materials



Vacuum sealer **Minipack - Torre SpA, FM76 DIGIT**



BÖWE Systec **Continuous paper trimmer, 310**



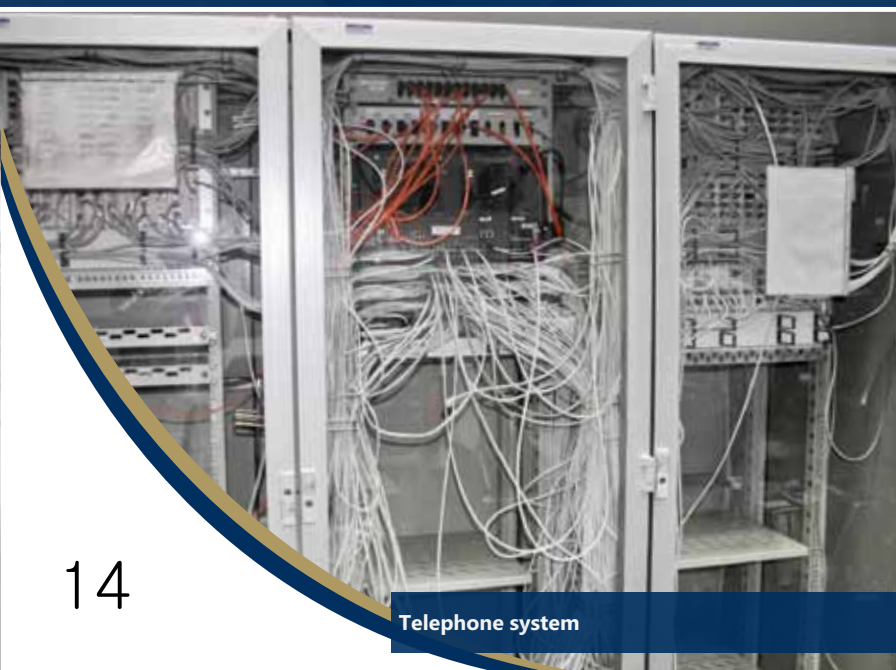
**FOLDING**  
HORIZON, EF-35



Incoming mail systems - **STIELOW-System 3003**



**Server-Systems**



**Telephone system**

## IT EQUIPMENT

IT infrastructure from telephone  
system over ERP systems to server  
units.





Conference corner



Modern open-plan office furniture



Conference room and equipment



Flat-screens



Printer



Projector



## OFFICE FURNITURE

Several floors of office furniture with table- and racking-systems, chairs, conference room furnishings, electrical office equipment (telephone systems, printers, projectors, ...), changing rooms, lockers, etc.



## CANTEEN

Fully equipped industry canteen for several hundred employees.



Stainless steel kitchen



Laboratory stands and equipment



Measuring equipment



## LABORATORY

Fully equipped laboratory stands and measuring technology for quality control, research and development





Band saw



FLOTT pillar drill



PFEIFFER belt grinder



GREIF belt grinder



ALZMETALL Pillardrill



Sheet metal bender



Horizontal band sawing machine



ALTENDORF circular saw bench

## WORKSHOP

Fully equipped wood and metal workshop for the construction and maintenance of plant-equipment and machinery: folding machine, punching machine, band saw, saw, belt sander, work bench, welding equipment, mobile work-shops, welding equipment, drill press, paint, saw, wood cutter, spare parts, etc.



## Directions from Munich Airport

Take the **Terminalstraße south toward Munich**. After 500 meters keep right and follow the **central avenue** for about 2.3 km. Then go straight to the St2584. After about 350 meters take the **driveway towards Stuttgart / Augsburg / Nuremberg / Salzburg / Munich**, and after 1.3 km turn **onto the A92**. After about 2.3 km take **exit 5-Freising South** and continue on the **B11**. After about 2.3 km turn **right onto the Neufahrner Straße**. Follow this for about 2.3 km, pass the roundabout and keep left after another 2.5 km to the **Echingerstraße**. After about 30 meters turn **left into Am Hart**.

## Hotels:

Best Western Grand City Hotel  
Dietersheimer Straße 58  
85375 Neufahrn  
Tel: ++49 (0) 8165-6300  
Fax: ++49 (0) 8165-630100  
E-Mail: info@hotel-neufahrn.bestwestern.de

Hotel-Gasthof Maisberger  
Bahnhofstraße 54  
85375 Neufahrn  
Telefon: +49 (0)8165 9990- 0  
Telefax: +49 (0)8165 9990-90

## Location



To receive regular updates or to arrange an inspection appointment, please register with us by sending an email to

**Avon@maynards.com**

Our current **auctions** and **liquidation sales** can be found on

**WWW.MAYNARDS.COM**

Technical data and all other data is non-binding.  
Prior sale, errors and changes reserved.  
All sales will be conducted in Euro (€).  
All goods are sold „AS IS, WHERE IS, WITH ALL  
FAULTS AND WITHOUT RECOURSE“.  
Illustrations, pictures or videos  
posted are for the convenience  
of the buyer only.  
Standard Terms and Conditions of  
AVON Cosmetics GmbH and  
Maynards Europe GmbH  
apply.

## Contact:

Project Manager:

Sebastian Geißler

Tel.: +49 8151 9989 753

Fax: +49 8151 9734 19

Cell.: +49 176 1043 1623

Mail: AVON@maynards.com

Maynards Europe GmbH

Maximilianstraße 16  
82319 Starnberg

Germany

Managing Directors:

Daniel Kröger, Andreas Matuszczak

Registered Office: Starnberg

District Court of Munich HRB 183924

VAT No.: DE815047230

Tax No.: 117/132/11682